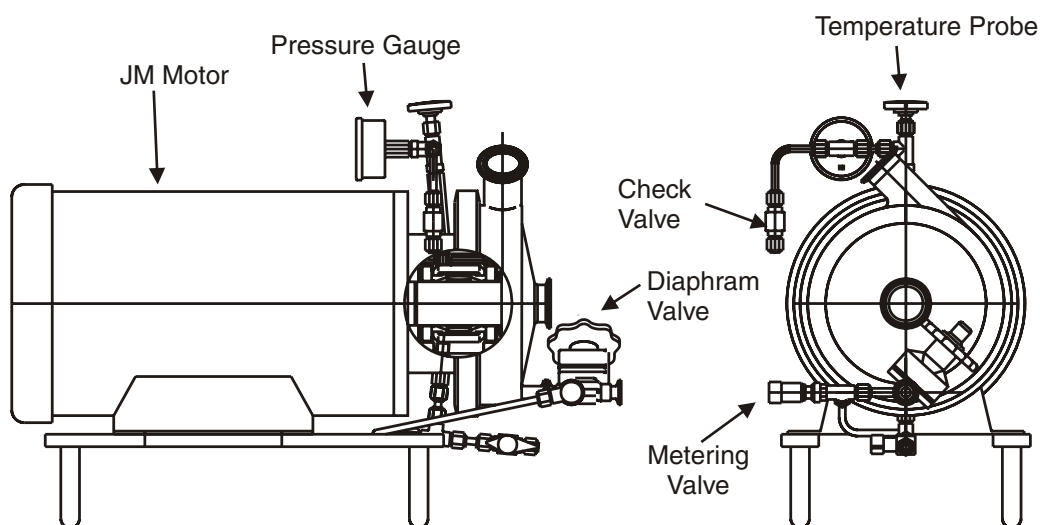


WAUKESHA WFI CENTRIFUGAL PUMP

WATER FOR INJECTION

Adapted from the rugged, precision 200 Series design for pumping water for injection; modifications to seal area prevent leakage of contaminants into pumpage. Although designed for high purity, pyrogen-free fluid used in pharmaceutical products, this pump is ideal for pumping high purity, deionized water, such as that used to rinse and cleanse electronic integrated circuits.

- **All wetted parts 316L stainless steel** with 20 Ra (240 grit) finish; 25 Ra (180 grit) and electro-polish optional
- **Single and double seal options:** John Crane Type 9, Chesterton 241, silicon carbide, tungsten carbide, Viton, EPDM
- **Optional factory-installed flush system** (shown) with pressure, temperature, flow-rate controls

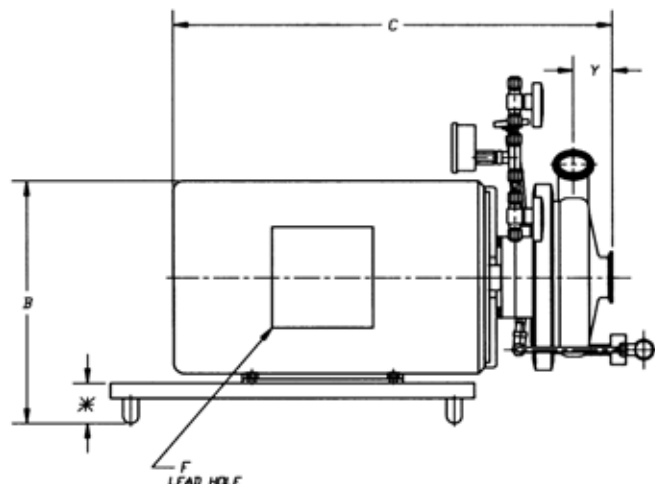


WAUKESHA WFI

MECHANICAL SPECIFICATIONS

FLUID HEAD

| MODEL | INLET in (mm) | OUTLET in (mm) | X in (mm) | Y in (mm) | Z in (mm) |
|--------|------------------|-------------------|--------------|--------------|--------------|
| 2045 | 1.5 (40) | 1.5 (40) | 4.41 (112) | 2.32 (59) | 2.25 (57) |
| 2045 | 2.0 (50) | 1.5 (40) | 4.41 (112) | 2.47 (63) | 2.25 (57) |
| 2065LV | 1.5 (40) | 1.5 (40) | 5.28 (134) | 2.47 (63) | 3.19 (81) |
| 2065LV | 2.0 (50) | 1.5 (40) | 5.28 (134) | 2.59 (66) | 3.19 (81) |
| 2065LV | 2.5 (65) | 1.5 (40) | 5.28 (134) | 2.66 (68) | 3.19 (81) |
| 2065 | 2.5 (65) | 2.0 (50) | 5.10 (129) | 2.66 (68) | 3.94 (100) |
| 2065HV | 3.0 (75) | 2.0 (50) | 5.10 (129) | 2.78 (71) | 3.94 (100) |
| 2085LV | 2.0 (50) | 1.5 (40) | 7.35 (187) | 2.28 (60) | 4.50 (114) |
| 2085 | 3.0 (75) | 2.5 (65) | 6.47 (164) | 3.38 (86) | 5.06 (129) |
| 2085 | 4.0 (100) | 2.5 (65) | 6.35 (161) | 2.75 (70) | 5.06 (129) |
| 2105 | 4.0 (100) | 4.0 (100) | 7.66 (195) | 3.58 (91) | 6.75 (171) |



UNIT WIDTH & HEIGHT

| FRAME | A in (mm) | B in (mm) | D in (mm) | F in (mm) | G in (mm) |
|-------|--------------|--------------|--------------|--------------|--------------|
| 145JM | 8.56 (218) | 7.87 (200) | 4.5 (114) | .50 (13) | 5.25 (133) |
| 182JM | 9.81 (249) | 9.44 (240) | 5.50 (140) | .75 (19) | 5.87 (149) |
| 184JM | 9.81 (249) | 9.44 (240) | 5.50 (140) | .75 (19) | 5.87 (149) |
| 213JM | 12.18(309) | 11.06(281) | 6.25 (159) | .75 (19) | 7.38 (187) |
| 215JM | 12.18(309) | 11.06(281) | 6.25 (159) | .75 (19) | 7.38 (187) |
| 254JM | 14.68(373) | 13.00(330) | 7.25 (184) | 1.00(25.4) | 8.94 (227) |
| 256JM | 14.68(373) | 13.00(330) | 7.25 (184) | 1.00(25.4) | 8.94 (227) |
| 284JM | 18.87(2250) | 14.63(372) | 8.00(203) | 1.50 (38) | 12.25(311) |
| 286JM | 18.87(2250) | 14.63(372) | 8.00(203) | 1.50 (38) | 12.25(311) |
| 324JM | 20.75(527) | 16.56(421) | 9 (229) | 1.50 (38) | 13.18(335) |
| 326JM | 20.75(527) | 16.56(421) | 9 (229) | 1.50 (38) | 13.18(335) |

