

# Polymix

## MULTISCREW FEEDERS

Arachem



**Model 5SL** with 5 screws,  
motor & sprockets driven.



**Model 2SN** with 2 screws  
& a gate valve at the outlet.

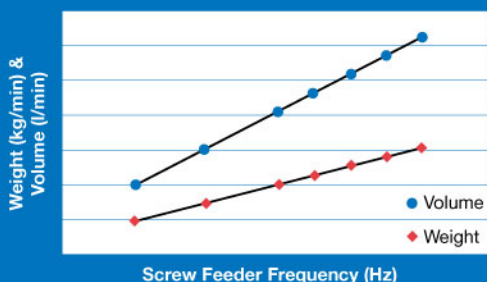
**Polymix** Feeders are volumetric multi-screw feeders for consistent discharge and accurate feeding of chemical powder.

Unique construction especially suitable for feeding both granular and arch-forming materials.

### ADVANTAGES

- Large active contact area
  - High feeding accuracy
  - Counter rotating screws
  - Sturdy and low-wear construction
- Easy silo discharge
  - Linear discharge curve
  - Self cleaning feeder screws
  - Less down time and maintenance

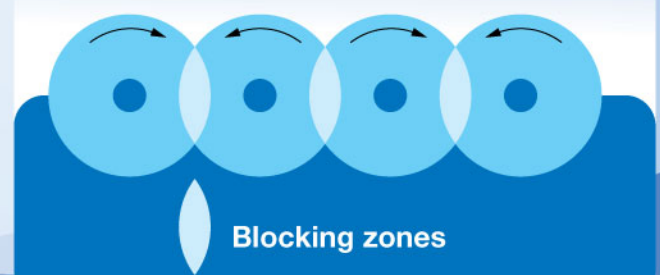
**Polymix** Calibration Chart  
(Weight & Volume Vs Frequency)



#### LINEAR DISCHARGE CURVE

**Polymix** Feeders function excellently in both continuous or batch wise process. It is widely used in the water, waste water treatment plant and general industries when feeding materials with large variations in volumetric weight.

Counter Rotating Feeder Screws



#### HIGH METERING ACCURACY

Typical materials that **Polymix** Feeders handle are: -

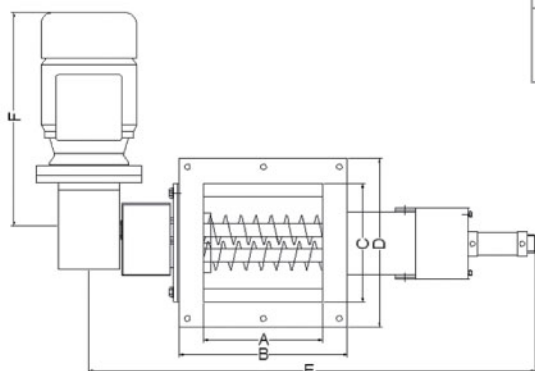
- Polyelectrolyte
- Sodium Silicofluoride
- Lime
- Potassium Permanganate
- Ferrous Sulphate
- Activated Carbon

# Polymix

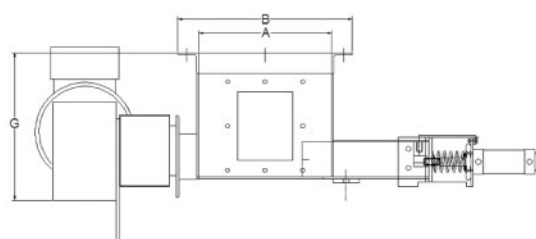
## Technical Data Dimensions

Model Dimension	2SL	2SN	3SL	3SN	4SL	4SN	5SL	5SN
A	180	180	219	219	258	258	700	700
B	255	255	294	294	333	333	780	780
C	180	180	219	219	258	258	400	400
D	255	255	294	294	333	333	100	100
E	680	680	720	720	760	760	380	380
F	400	400	400	400	400	400	650	650
G	216	216	216	216	216	216	1340	1340
No. of screws	2	2	3	3	4	4	5	5
Max. Capacity L/min	0.03	0.86	0.04	1.28	0.06	1.70	1.02	18.4

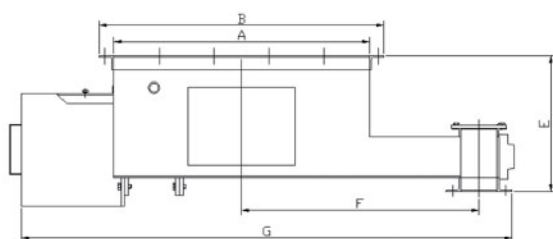
\* All measurements in mm



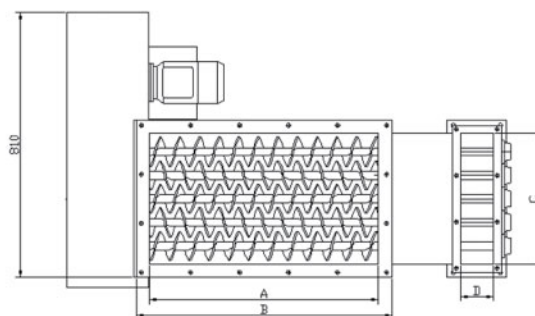
**Plan View** 2 screws, 3 screws, and 4 screws



**Side View** 2 screws, 3 screws, and 4 screws

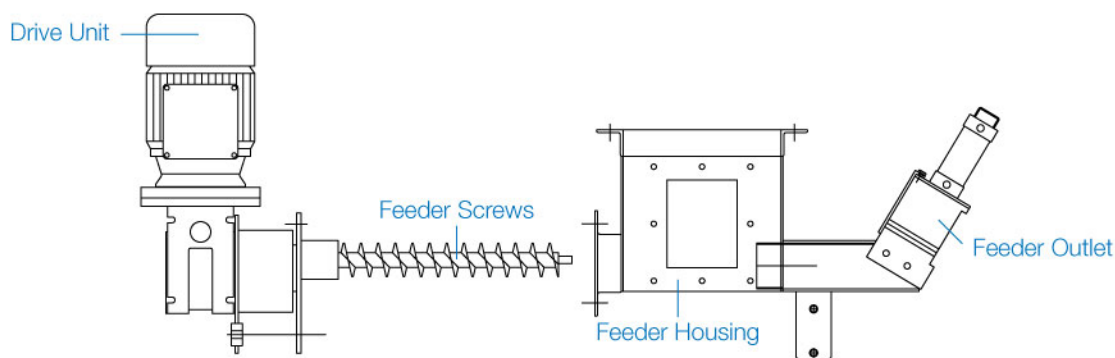


**Side View** 5 screws



**Plan View** 5 screws

## Easy Maintenance without special tools



### Arachem

**Arachem (M) Sdn Bhd** (127181-D)

11, Persiaran Industri, Taman Perindustrian Sri Damansara, Bandar Sri Damansara, 52200 Kuala Lumpur, Malaysia.

Tel: 603-6276 2323 Fax: 603-6273 3555 E-mail: [engineering@arachem.com.my](mailto:engineering@arachem.com.my) Website: [www.arachem.com.my](http://www.arachem.com.my)